

E.H.R Panel Member Questions

1. What institutional or agency challenges or barriers exist to the implementation of E.H.R. systems, particularly in the substance abuse treatment field in implementation of E.H.R. systems?
2. What are institutional or agency benefits from implementing an E.H.R. system in the substance abuse treatment area?
3. What can be done to accelerate the use of interoperable electronic health data and development of common data standards in behavioral health treatment settings?
4. How do you envision a uniform E.H.R. system for primary care, mental health and substance abuse treatment providers when there are different state reporting requirements?
5. Treatment providers:
 - How have you been able to integrate health information technology into the administrative, clinical, and billing functions of your treatment program?
 - How do you plan to conform to national data standards and criteria for “meaningful use” of certified E.H.R. systems that are stipulated by the ARRA HITECH Act?



National Institute on Drug Abuse
Clinical Trials Network
EMR Workshop
Process of EMR/CDE Initiative

September 24, 2010

Overview of process to date

- Robert Lindblad, MD
Liaison Data and Statistics Center 2/
Principal Investigator, NIDA Clinical
Trials Network Clinical Coordinating
Center
The EMMES Corporation

Our Mission

A.M.



The Big Picture

P.M.



EMR Questions

EMR

- Federal “push” to adopt
- Multiple vendors developing EMR
 - Hospital based systems
 - Individual practice based systems
 - Interoperability
- Content
 - Clinical care
 - Research

EMR and NIDA

- Need to have substance use disorders at the table
 - Identify initial data elements
 - Make data elements available for incorporation into developing EMR

NIDA CTN

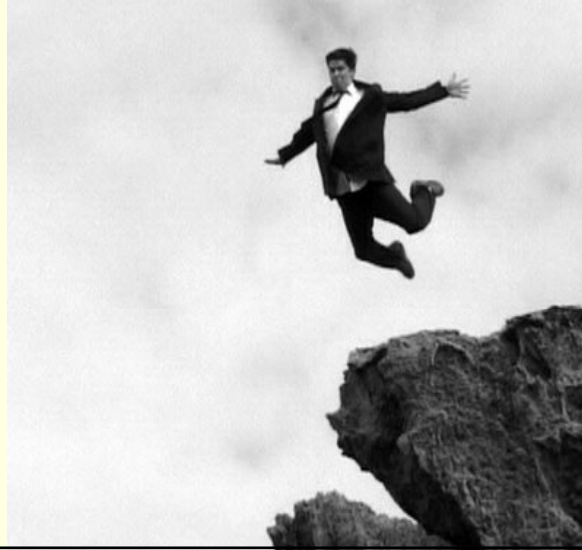
- How to accomplish?

NIDA CTN

- How to accomplish?

Ask Betty Tai!

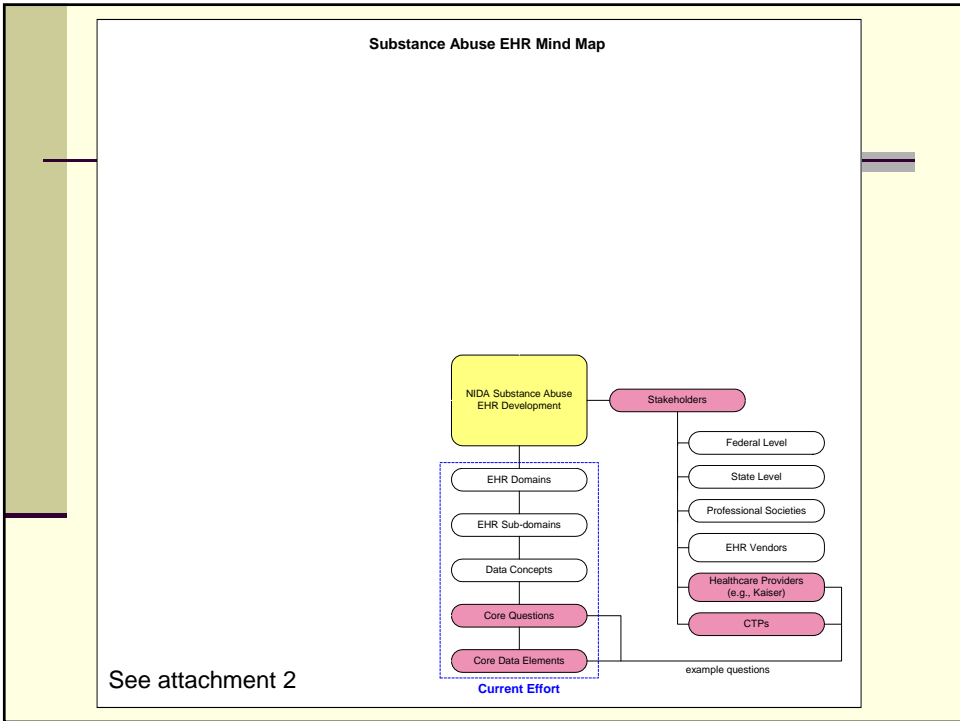
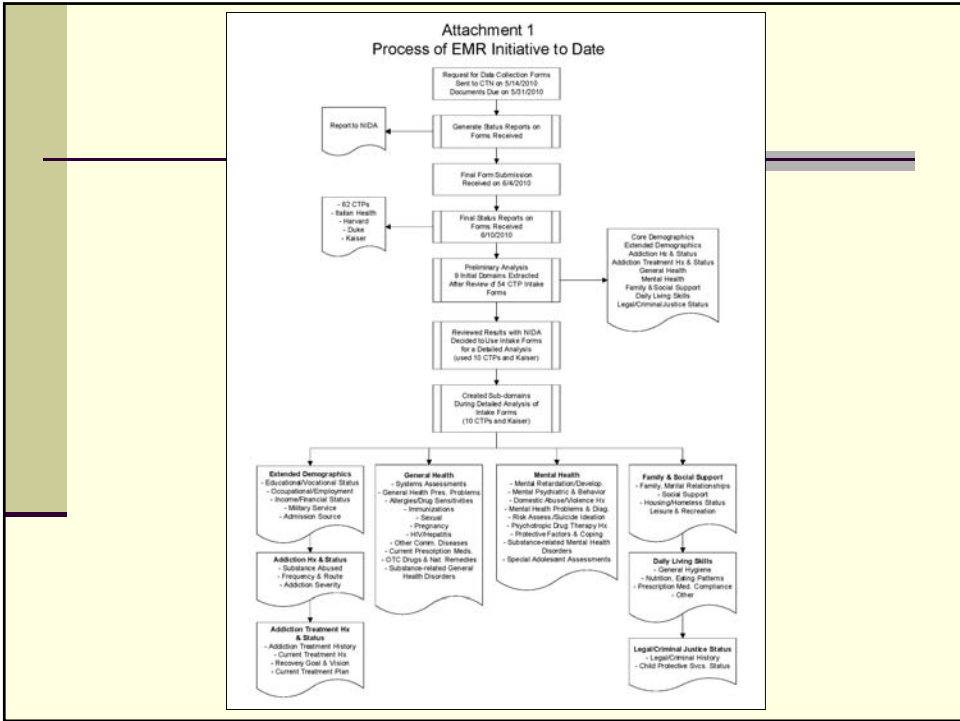
Next Step

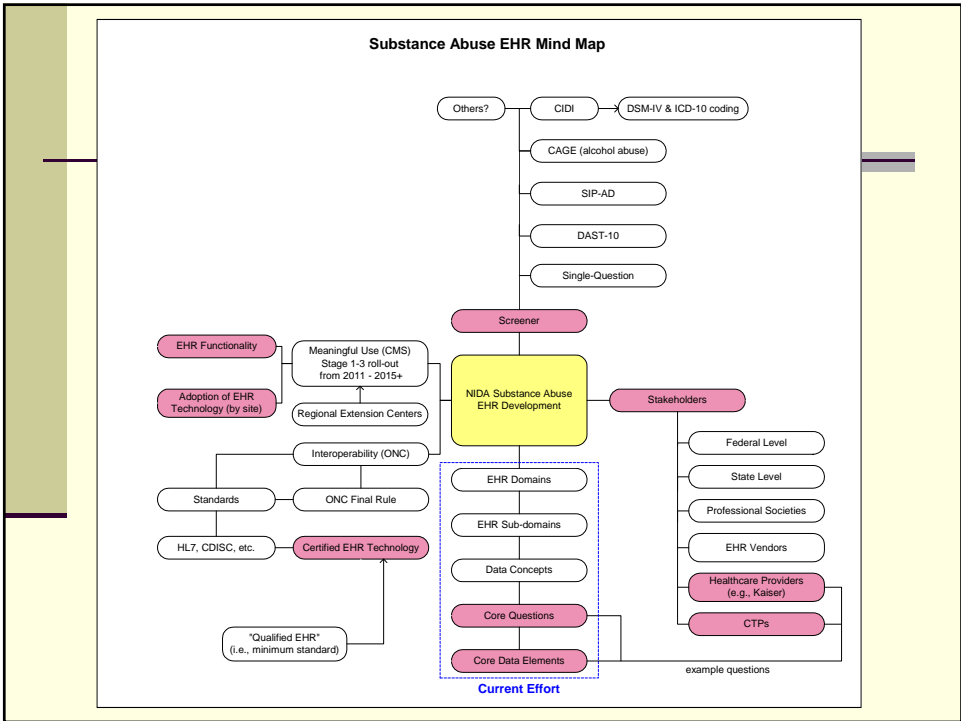
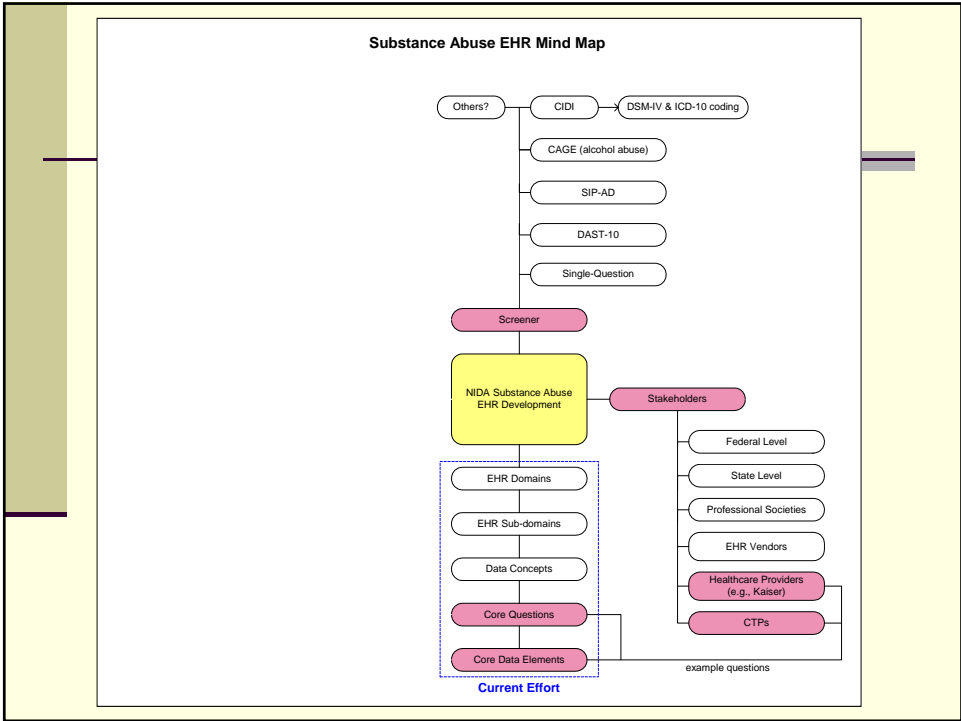


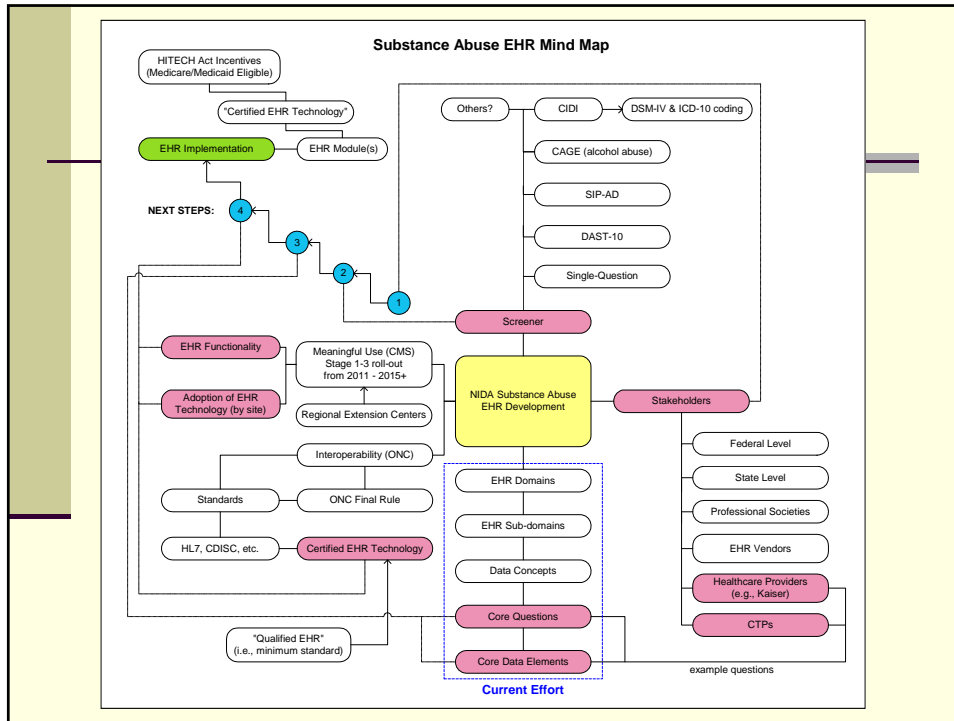
Process of EMR Initiative to date

- Obtained 62 CTP and 4 Health Care Provider data collection/intake forms; reviewed 54
- Created 9 domains and reviewed with NIDA
- Detailed analysis of forms from 10 selected CTPs and Kaiser to create 50 sub-domains with data concepts and extracted questions
- Developed “synthesis” of core questions for four main substance abuse domains

See details in attachment 1







Goals

- Today's meeting: review and revise the draft hierarchy and core questions for an EMR

Domain & Sub-domain Review

- Robert Gore-Langton, PhD
NIDA Clinical Trials Network
Data and Statistics Center 2
The EMMES Corporation

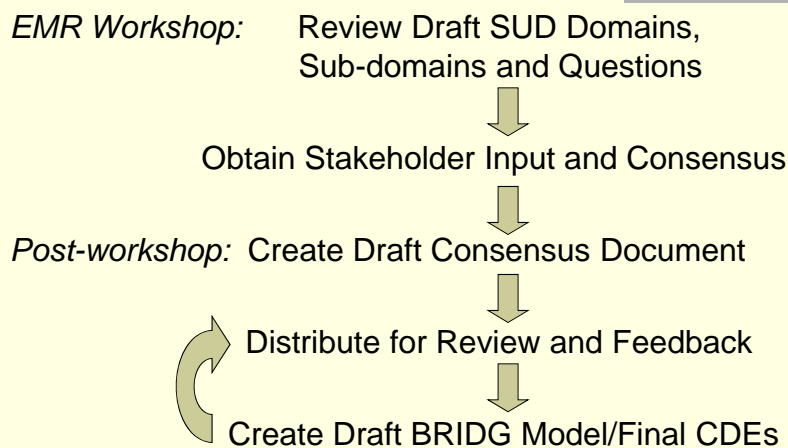
Today's Objectives for EMR development

- Review the draft Domains and Sub-domains
 - Is the draft hierarchy appropriate?
 - Is anything critical or important missing?
 - Do the "Data Concepts" (i.e., conceptual meanings) capture the important ideas?
- Review draft Core Questions that were "synthesized" from similar questions on intake forms of multiple CTPs and other HCPs

Constraints and Considerations for EMR development

- An EMR “core” or “minimal” data set for Substance Use Disorders (SUD), which may be expanded as required
- Appropriate data elements for secondary use of healthcare data in research
- Serve as a starting point for EMR vendors to standardize data elements
- Must be developed with interoperability and “Certified EHR Technology” in mind

Overview of EMR Review Process



CTN Nodes and Sites Reviewed

Nodes	Sites	Reviewed
Appalachian (20)	AMS, CPCDS, Crossroads, Meridian, WVU	5
Delaware Valley (21)	Belmont , Caron, Jefferson, NETreatment, PHMC, Princeton, Upenn Health, Einstein	8
Florida (22)	Gateway , Drug Free Living	2
Long Island (23)	North Shore, Phoenix House	2
New York (23)	ARTC, Greenwich House, Odyssey	3
New England (25)	Mercy , CAB Health, CT Counseling, Harford Dispensary	4
Ohio Valley (26)	CenterPointe, Crossroads, Cumberland, DCCA, Gibson Recovery, Haymarket, Jackson, JADAC , Maryhaven , Meridian, Midtown , Oakdale, Pretera, Rehab After Work	14
Pacific Northwest (27)	King County , State Official, Misc. Forms	3
Pacific Region (28)	Matrix , Tarzana, BAART	3
Southern Consortium (29)	Coastal Horizons, LRADAC	2
Southwest (30)	LifeLink	1
Texas (31)	Homeward Bound, Nexus, Misc. Forms	3
Oregon/Hawaii (32)	ChangePoint, COTA, Misc. Forms	3
California/Arizona (32)	La Frontera	1
	Total:	54

See attachment 3

Other Organizations Reviewed

Organizations	Reviewed
Alaska (Community Health Services – Gunaanasti/Deilee Hit)	1
Kaiser Permanente	1
Harvard Medical	1
Italian Health System	1
Veterans Administration	1

Domain/Sub-domains on Intake Forms - 1

Domain	Sub-Domain	%
Extended Demographics	Educational/Vocational Status	84.6
	Occupational/Employment Status	84.6
	Military Service	56.4
	Income/Financial Status	53.8
	Admission Source	30.8
Addiction History & Status	Substance Abused	92.3
	Frequency & Route	84.6
	Addiction Severity	79.5
Addiction Treatment History & Status	Addiction Treatment Hx	76.9
	Recovery Goal or Vision	69.2
	Current Treatment Status	28.2
	Current Treatment Plan	25.6

See attachment 4

Domain/Sub-domains on Intake Forms - 2

Domain	Sub-Domain	%
General Health	General Health Presenting Problems	79.5
	Current Prescription Medications	69.2
	Pregnancy	61.5
	Sexual	51.3
	Allergies/Drug Sensitivities	48.7
	Other Communicable Diseases	43.6
	HIV/Hepatitis	41.0
	Systems Assessments	23.1
	Substance Related General Health Disorders	20.5
	Immunizations	12.8
	OTC Drugs and Natural Remedies	5.1

Domain/Sub-domains on Intake Forms - 3

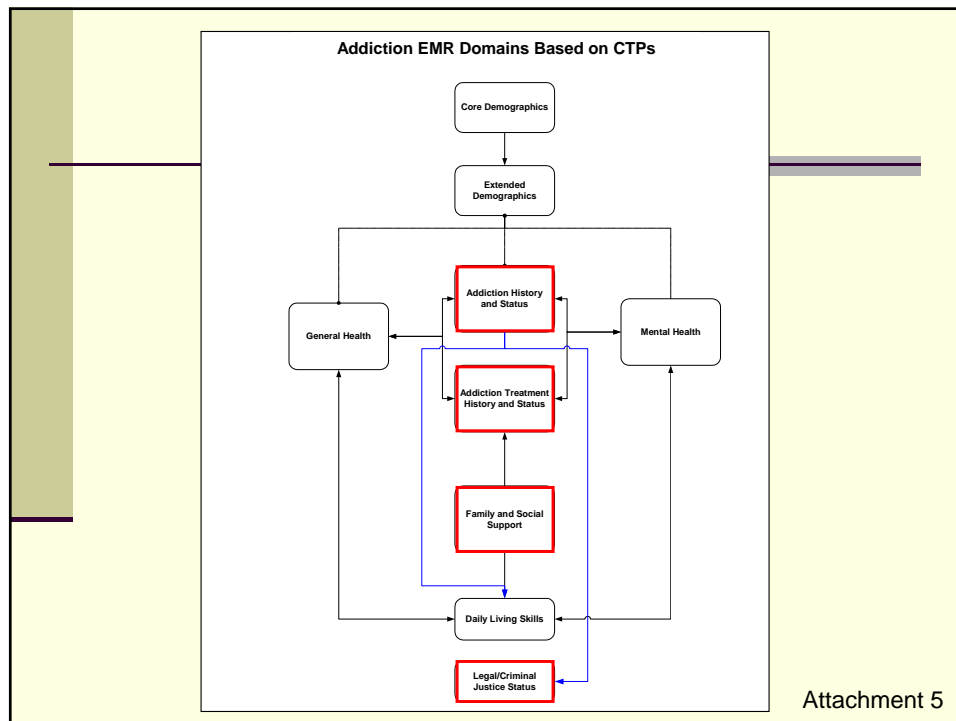
Domain	Sub-Domain	%
Mental Health	Risk Assessment including Suicide Ideation	82.1
	Mental Health Problems Symptoms & Diagnoses	74.4
	Mental Psychiatric & Behavior Services Hx/Status	69.2
	Domestic Abuse/Violence Hx	59.0
	Protective Factors and Coping Skills	51.3
	Psychotropic Drug Therapy Hx	38.5
	Mental Retardation/Development Disability	28.5
	Substance Related Mental Health Disorders	2.6

Domain/Sub-domains on Intake Forms - 4

Domain	Sub-Domain	%
Mental Health, continued	Special Adolescent Assessments:	
	- Abuse Hx, including Neglect	23.1
	- Medical/Physical	12.8
	- Functioning in Social Settings	10.3
	- Mental Health	10.3
	- Functioning in Family	7.7
	- Functioning in School	7.7
	- Substance Use	5.1
	- Treatment Hx	2.6

Domain/Sub-domains on Intake Forms - 5

Domain	Sub-Domain	%
Family and Social Support	Family, Marital and Interpersonal Relationships	79.5
	Housing/Homeless Status	79.5
	Social Support (Community, Cultural, Spiritual)	76.9
	Leisure & Recreation Status	28.2
Daily Living Skills	Nutrition/Diet, Eating Patterns or Disorders	43.6
	General Hygiene	25.6
	Other	25.6
	Prescription Medication Compliance	5.1
Legal/Criminal Justice Status	Legal/Criminal Justice History	87.2
	Child Protective Services Status	7.7



Four SUD Domains to be Reviewed

Domains	No. of Sub-domains	No. of Data Concepts	No. of Questions (parent)
Addiction History & Status	3	16	27 + 2 instruments
Addiction Treatment History & Status	4	19	34 + 1 instrument
Family and Social Support	4	14	32
Legal/Criminal Justice Status	2	6	19

See attachment 2

Domain:

Addiction History & Status - 1

Sub-domains:

- **Substances Abused**
- **Frequency & Route**
- **Addiction Severity**

Domain:

Addiction History & Status - 2

Sub-domains and Data Concepts:

- **Substances Abused**
 - Abused substances
 - Age of first use
 - When last used
 - For adolescents or children only
- **Frequency & Route**
 - Frequency of use
 - Route of use
 - Pattern of use
 - Amount used (i.e., dose)
- **Addiction Severity**
 - Dependence/Withdrawal/Tolerance
 - Substance Abuse Consequences
 - Concerns
 - Recognition of problem
 - Family history
 - Multi-question index
 - Multi-question screen
 - Gambling

Domain:

Addiction History & Status - 3

Sub-domains and Data Concepts:

- **Substances Abused**
 - Abused substances
 - Age of first use
 - When last used
 - For adolescents or children only
- **Frequency & Route**
 - Frequency of use
 - Route of use
 - Pattern of use
 - Amount used (i.e., dose)
- **Addiction Severity**
 - Dependence/Withdrawal/Tolerance
 - Substance Abuse Consequences
 - Concerns
 - Recognition of problem
 - Family history
 - Multi-question index
 - Multi-question screen
 - Gambling

Domain:

Addiction History & Status - 4

Sub-domains and Data Concepts:

- **Substances Abused**
 - Abused substances
 - Age of first use
 - When last used
 - For adolescents or children only
- **Frequency & Route**
 - Frequency of use
 - Route of use
 - Pattern of use
 - Amount used (i.e., dose)
- **Addiction Severity**
 - Dependence/Withdrawal/Tolerance
 - Substance Abuse Consequences
 - Concerns
 - Recognition of problem
 - Family history
 - Multi-question index
 - Multi-question screen
 - Gambling

Domain:

Addiction Treatment History & Status - 1

Sub-domains:

- **Addiction Treatment History**
- **Current Treatment Status**
- **Recovery Goal or Vision**
- **Current Treatment Plan**

Domain:

Addiction Treatment History & Status - 2

Sub-domains and Data Concepts:

- **Addiction Treatment History**
 - Previous treatments
 - Quitting or reducing use
- **Current Treatment Status**
 - Why do you use substances
 - Why use restarted
 - Stress contributors
 - Ability to control
- **Recovery Goal or Vision**
 - Hope
 - Reason seeking treatment
 - Expectations/Readiness
 - Improvement indicators

continued...

Domain:

Addiction Treatment History & Status - 3

Sub-domains and Data Concepts:

- **Addiction Treatment History**
 - Previous treatments
 - Quitting or Reducing Use
- **Current Treatment Status**
 - Why do you use substances
 - Why use restarted
 - Stress contributors
 - Ability to control
- **Recovery Goal or Vision**
 - Hope
 - Reason seeking treatment
 - Expectations/Readiness
 - Improvement indicators

continued...

Domain:

Addiction Treatment History & Status - 4

Sub-domains and Data Concepts:

- Addiction Treatment History
 - Previous treatments
 - Quitting or Reducing Use
- Current Treatment Status
 - Why do you use substances
 - Why use restarted
 - Stress contributors
 - Ability to control
- **Recovery Goal or Vision**
 - Hope
 - Reason seeking treatment
 - Expectations/Readiness
 - Improvement indicators

continued...

Domain:

Addiction Treatment History & Status - 5

Sub-domains and Data Concepts:

- **Current Treatment Plan**
 - Self-help
 - Recent non use
 - Strengths/motivation
 - Barriers
 - Supporting persons
 - Contact for immediate assistance
 - Documentation needed
 - Individualized treatment plan and review (i.e., service plan)
 - For each LIFE Area describe problem, provide treatment goal, objectives to be achieved, integrated program of therapies and activities to meet objectives, and target dates for therapies/objectives

Domain:

Family and Social Support - 1

Sub-domains:

- **Family, Marital and Interpersonal Relationships**
- **Social Support, including Community, Cultural, Spiritual**
- **Housing/Homeless Status**
- **Leisure & Recreation Status**

Domain:

Family and Social Support - 2

Sub-domains and Data Concepts:

- **Family, Marital and Interpersonal Relationships**
 - Drug or alcohol use by family members
 - Emotional problems by family members
 - Marital status
 - Children
 - Substance abuse related conflicts with family members
 - Conflicts with friends
 - Family violence
 - Abuse

continued

Domain:

Family and Social Support - 3

Sub-domains and Data Concepts:

- **Social Support, including Community, Cultural, Spiritual**
 - Adequacy of support
 - Family support in treatment
 - Community or cultural support
- Housing/Homeless Status
 - Housing/Homelessness
- Leisure & Recreation Status
 - Leisure activities

Domain:

Family and Social Support - 4

Sub-domains and Data Concepts:

- Social Support, including Community, Cultural, Spiritual
 - Adequacy of support
 - Family support in treatment
 - Community or cultural support
- **Housing/Homeless Status**
 - Housing/Homelessness
- Leisure & Recreation Status
 - Leisure activities

Domain:
Family and Social Support - 5

Sub-domains and Data Concepts:

- Social Support, including Community, Cultural, Spiritual
 - Adequacy of support
 - Family support in treatment
 - Community or cultural support
- Housing/Homeless Status
 - Housing/Homelessness
- **Leisure & Recreation Status**
 - Leisure activities

Domain:
Legal/Criminal Justice Status - 1

Sub-domains:

- **Legal/Criminal Justice History**
- **Child Protective Services Status**

Domain:
Legal/Criminal Justice Status - 2

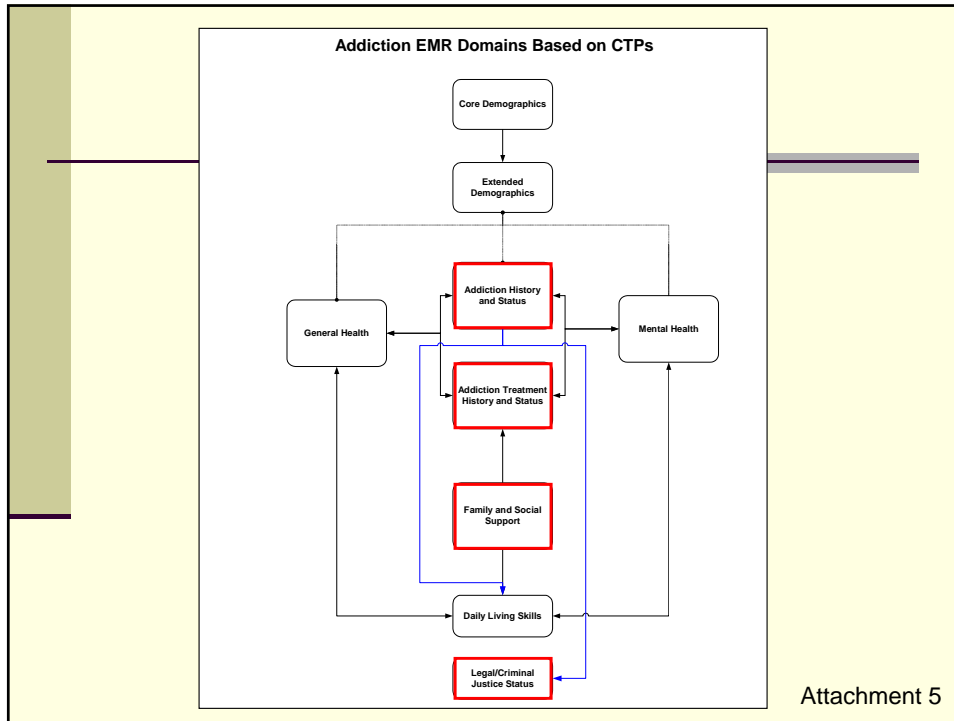
Sub-domains and Data Concepts:

- **Legal/Criminal Justice History**
 - Legal status
 - Driver's license
 - Judicial order/mandate
 - Gambling
- **Child Protective Services Status**
 - Child in custody, applicable to child/adolescent
 - Child in custody, applicable to parent or guardian

Domain:
Legal/Criminal Justice Status - 3

Sub-domains and Data Concepts:

- **Legal/Criminal Justice History**
 - Legal status
 - Driver's license
 - Judicial order/mandate
 - Gambling
- **Child Protective Services Status**
 - Child in custody, applicable to child/adolescent
 - Child in custody, applicable to parent or guardian



Pathway to Interoperability

- Brian Campbell, Lead, CDE Team
 NIDA Clinical Trials Network
 Data and Statistics Center 2
 The EMMES Corporation

Moving Forward - 1

Integrating with Biomedical Research Integrated Domain Group (BRIDG)

- Develop BRIDG-compatible model based on the identified domains/sub-domains/questions/CDEs
- Submit BRIDG-compatible model to BRIDG/Vocabulary and CDE working group for input and/or certification
- Submit model review to the group for comments
- Make any required changes to domains/sub-domains/CDEs

Moving Forward - 2

- Leverage tools created by the Center for Biomedical Informatics and Information Technology (e.g. NCI Thesaurus, caDSR, Form Builder, Semantic Integrated Workbench, HL7 Services-Aware Interoperability Framework (under development))
- Follow the development of the EMR initiative through participation in CDISC, caBIG workspaces, etc.
- Continue to enhance substance abuse model as the science demands

Introduction to Afternoon Session

Example Draft Questions

Robert Gore-Langton, PhD



Approach Used in “Synthesis” of core questions for an EMR

- Essence of each question embodied in a Data Concept that is represented by intake forms of one or more CTPs and/or Health Care Providers
- May be one or more questions per Data Concept
- Questions include structured responses where possible (e.g., yes/no, list of values ...)
- A simple ‘parent’ question may be followed by more detailed ‘child’ questions where appropriate
- Language kept simple and style kept consistent across domains and sub-domains
- Any existing CDEs will be considered separately

Domain:

Addiction History & Status

Sub-domains:

- Substances Abused  example questions
- Frequency & Route  example questions
- Addiction Severity

Domain:

Addiction History & Status

Sub-domain:

Substances Abused

Example questions for Data Concept: Abused substances

- What substance(s) are you seeking treatment for?
Select all that apply (List of multiple substances)
- What substances have you ever used in your life?
Select all that apply
- *Answer for each substance ever used. What were your ages when you first used these substances?*
- *Answer for each substance ever used. When did you last use these substances?*

Domain:

Addiction History & Status

Sub-domain:

Frequency & Route

Example questions for Data Concept: Route of use

- *Answer for each substance used in past 6 months.*
Of the substances used in the past 6 months, how were these taken? (Drank/Swallowed, Smoked, Chewed, Injected/IV, Inhaled/Snorted)
- If any substance was injected in the past 6 months, did you share needles? (Yes/No)

Domain:

Addiction Treatment History & Status

Sub-domains:

- Addiction Treatment History
 - ↳ example questions
- Current Treatment Status
- Recovery Goal or Vision
- Current Treatment Plan

Domain:

Addiction Treatment History & Status

Sub-domain:

Addiction Treatment History

Example questions for Data Concept: Previous Treatments

- Have you ever had previous treatment, education or diversion for substance abuse? Yes/No
 - Specify which: treatment, education, diversion
 - Specify substances: alcohol, tobacco, drugs
- How many times and when have you had detox/rehab treatment?
 - Number of times
 - For each time, provide length of stay/treatment
 - For each time, provide start month and year

Domain:

Addiction Treatment History & Status

Sub-domain:

Addiction Treatment History


Example questions for Data Concept: Quitting or Reducing Use

- Have you attempted to quit, cut down or stop substance use?
 - Yes/No
- If yes, who helped support this attempt?
 - family, friends, support group, on my own
- If yes, how long have you been attempting to quit, cut down or stop substance use?
 - Years: less than 1, 1, 2, 3, 4, 5, 6, 7, 8, 9, 10, 11 or more
- Have you ever been treated for withdrawal?
 - Yes/No

Domain:

Family and Social Support

Sub-domains:

- Family, Marital and Interpersonal Relationships  **example questions**
- Social Support, including Community, Cultural, Spiritual
- Housing/Homeless Status
- Leisure & Recreation Status

Domain:

Family and Social Support

Sub-domain:

Family, Marital and Interpersonal Relationships

Example questions for Data Concept:

Drug or alcohol use by family members

- Has anyone in your family ever had a problem with drugs or alcohol use?
 - Yes/No; If Yes, specify: Husband, Wife, Mother, Father, Brother, Sister, Grandparent, Aunt/Uncle, Step parent, Your children, Other*Select all that apply*

Substance abuse related conflicts with family members

- Has your use of drugs or alcohol caused conflicts or disruption between yourself and other family members?
 - Yes/No; If yes, explain the conflict
 - How troubled have you been by this conflict?

Domain:

Legal/Criminal Justice Status

Sub-domains:

- Legal/Criminal Justice History
 - ☞ example questions
- Child Protective Services Status

Domain:

Legal/Criminal Justice Status

Sub-domain:

Legal/Criminal Justice History

Example questions for Data Concept: Legal Status

- Do you have any legal charges pending?
 - Yes/No; If yes, explain. Provide court date if applicable.
- Have you ever been convicted of a drug or alcohol related criminal offense?
 - Yes/No; If yes, specify: Operating Under influence (DWI/DUI/OUI), Minor in Possession, Drug Possession, Assault, Sexual Offense, Theft, Other

Select all that apply

Compare Synthesis Questions with Intake Form Questions - 1

Domain: Addiction Treatment History & Status

Sub-domain: Addiction Treatment History

Question Synthesized: Have you ever had previous treatment, education or diversion for substance abuse? Yes/No. Specify which: treatment, education, diversion. Specify substances: alcohol, tobacco, or drugs.

Site 1: Have you ever had previous Alcohol and Drug treatment, education, or diversion? If yes, check all the appropriate boxes and fill in the following information...

Site 2: Previous Drug and Alcohol Treatment

Site 3: Have you ever been in treatment? If yes, last treatment date and facility?

continued ...

Compare Synthesis with Intake Form - 2

continued ...

Site 3: What was your plan at discharge?

Site 3: Previous treatment date

Site 3: Name of Treatment Facility

Site 4: Have you been in alcohol/drug treatment within the last two years? If yes, for your most recent treatment, how long did you stay free from alcohol/drugs?

Site 5: Have you previously been in treatment for alcohol and/or drug use?

Compare Synthesis with Intake Form - 3

Question Synthesized: How many times and when have you had detox/rehab treatment? For each time, provide length of stay/treatment and the start month and year.

Site 1: Detox – How many times: 1, 2, 3, 4+, Dates

Site 2: Detox/Rehab

Site 3: Treatment Facility Type: Detox Center, Rehabilitation Center, Outpatient Treatment

Site 3: Length of stay

Site 3: Length of sobriety

Site 3: Past Treatment Options Attempted (including year, facility, type of treatment, length of stay, length of sobriety)

Common Data Elements (CDEs)

NCI's Cancer Data Standards Registry and Repository (caDSR)

ISO/IEC 11179 Standard for Metadata Registries

Concept entity (Data Element Concept) is separate from its physical representation in the database (Value Domain)

Existing CDEs in the caDSR

caDSR search term	Number of CDEs	caDSR search term	Number of CDEs
Substance, Abuse	4	Mental	23
Alcohol	78	Physical activity	78
BMI	2	Quality	505
Drug	116	Sleep	23
Family	176	Treatment	1287
Friends	12	Tobacco	41

Example CDEs relevant to substance abuse in the Cancer Data Standards Registry and Repository (caDSR) - 1

- “Substance + Abuse” CDEs Preferred Question or Preferred Definition:
 - How old were you when you FIRST used this drug?
 - Questions asking the respondent how many days in the past 30 days s/he used an illicit substance (definition; no preferred question)
 - Do you have the following symptoms of substance dependence?
 - Have you EVER used any of these medicines or drugs? (definition states use of illicit substances or certain prescribed substances during his/her entire life)

Example CDEs relevant to substance abuse in the Cancer Data Standards Registry and Repository (caDSR) - 2

CDE Preferred Questions

- “Alcohol”:
 - Does the patient currently consume alcohol?
- “BMI”:
 - Body Mass Index (BMI)
 - Median BMI at HDL Cholesterol Measurement
- “Sleep”:
 - My sleep was restless (assesses frequency)
 - I am sleeping well (FACT-G questionnaire scale score)
- “Tobacco”:
 - During the past 12 months, have you stopped smoking for one day or longer because you were trying to quit?

Have a productive afternoon!

Domain	Sub-domain	Data Concept
Addiction History & Status	Substances Abused	Abused substances
		Age of first use
		When last used
		For adolescents or children only

Domain	Sub-domain	Data Concept
Addiction History & Status	Frequency & Route	Frequency of use
		Route of use
		Pattern of use
		Amount used (i.e., dose)

Domain	Sub-domain	Data Concept
Addiction History & Status	Addiction Severity	Dependence/ Withdrawal/ Tolerance
		Substance Abuse Consequences
		Concerns
		Recognition of problem
		Family history
		Multi-question index
		Multi-question screen
		Gambling

Domain	Sub-domain	Data Concept
Addiction Treatment History & Status	Addiction Treatment History	Previous treatments
		Quitting or reducing use

Domain	Sub-domain	Data Concept
Addiction Treatment History & Status	Current Treatment Status	Why do you use substances
		Why use restarted
		Stress contributors
		Ability to control

Domain	Sub-domain	Data Concept
Addiction Treatment History & Status	Recovery Goal or Vision	Hope
		Reason seeking treatment
		Expectations/ Readiness
		Improvement indicators

Domain	Sub-domain	Data Concept
Addiction Treatment History & Status	Current Treatment Plan	Self-help
		Recent non use
		Strengths/ motivation
		Barriers
		Supporting persons
		Contact for immediate assistance
		Documentation needed
		Individualized treatment plan and review (service plan)

Domain	Sub-domain	Data Concept
Family and Social Support	Family, Marital and Interpersonal Relationships	Drug or alcohol use by family members
		Emotional problems by family members
		Marital status
		Children
		Supporting persons
		Substance abuse related conflicts with family members
		Conflicts with friends
		Family violence
		Abuse

Domain	Sub-domain	Data Concept
Family and Social Support	Social Support, including Community, Cultural, Spiritual	Adequacy of support
		Family support in treatment
		Community or cultural support

Domain	Sub-domain	Data Concept
Family and Social Support	Housing/Homeless Status	Housing/Homelessness

Domain	Sub-domain	Data Concept
Family and Social Support	Leisure & Recreation Status	Leisure activities

Domain	Sub-domain	Data Concept
Legal/Criminal Justice Status	Legal/Criminal Justice History	Legal status
		Driver's license
		Judicial order/ mandate
		Gambling

Domain	Sub-domain	Data Concept
Legal/Criminal Justice Status	Child Protective Services Status	Child in custody, applicable to child/adolescent
		Child in custody, applicable to parent or guardian

Extra Slides

Brief Screening Question

- Example:

“How many times in the past year have you used an illegal drug or used a prescription medication for non-medical reasons?”

Reference: Smith PC, Schmidt SM, Allensworth-Davies D and Saitz R. A Single-Question Screening Test for Drug Use in Primary Care. *Arch Intern Med* 2010; 170(13):1155-1160

Brief Screening Characteristics

- For detection of current drug use disorder

- 100% sensitive
- 73.5% specific

- For detection of current drug use

- 92.9% sensitive*
- 94.1% specific

* Sensitivity was 84.7% when considering oral fluid test results for commonly abused drugs

Characteristics are similar to the DAST-10 Questionnaire